

SERAY 8
NEXUS



<< We work hard to house your dreams >>

SITE OVERVIEW

SERAY 8 , NEXUS is located in the suburban area known as the New Hospital area in the District of Larnaca,

The project has been designed according to the highest construction standards combining the elegance and aesthetics aspect with functionality and comfort, in order to insure an ideal residence in a serene environment.

The New Hospital area provides all the necessary amenities within close range, such as supermarkets, public parks, bakeries, sport centers, the mall, as well as medical related facilities which make the project adapted to every residents needs.

Additionally, SERAY 8 NEXUS is within walking distance to the Metropolis Mall and approximately an eight-minute drive from the International Airport of Larnaca, the Salt Lake of Larnaca, as well as the town center and the beaches of Finikoudes and Mackenzie.

■ Great Locations

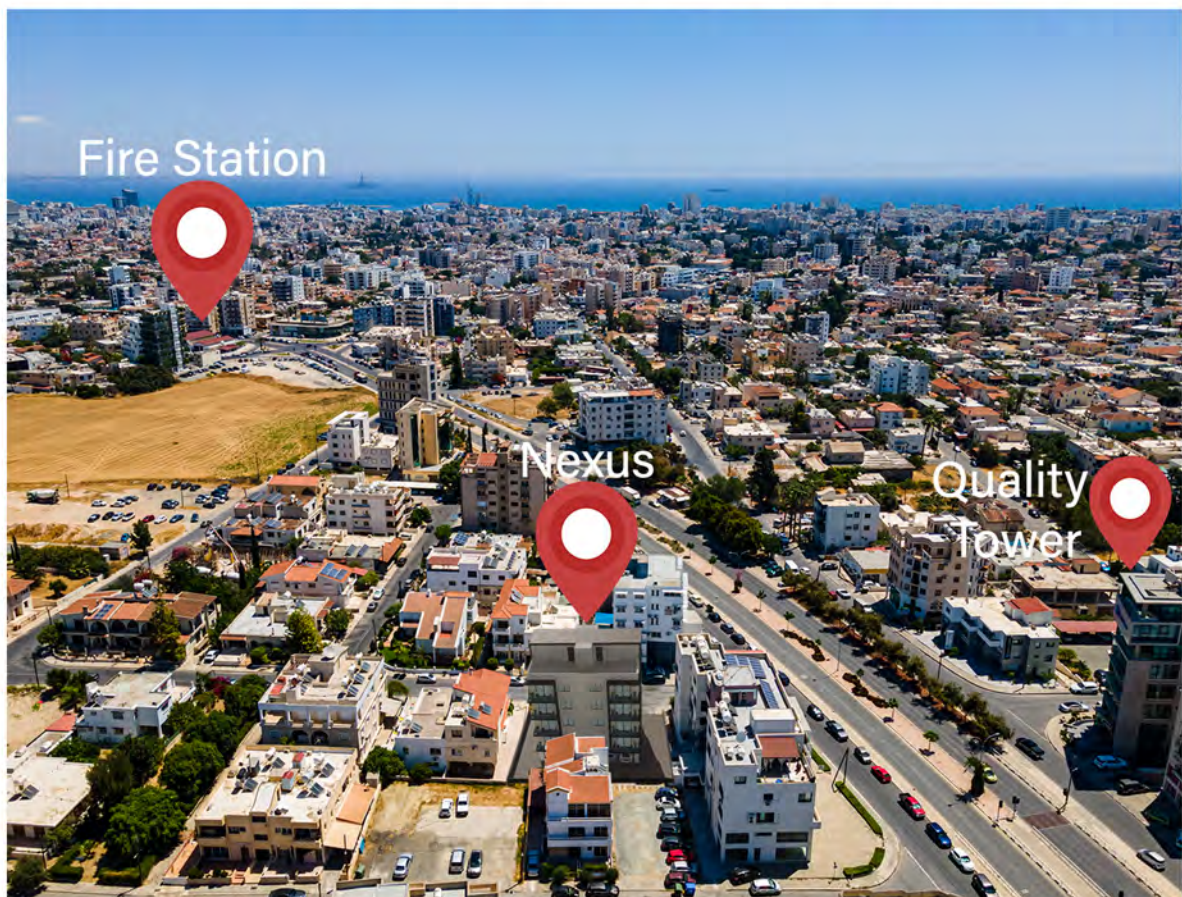
■ Innovative Design

■ Quality Workmanship

■ Value for Money



NEXUS ON SITE





SERAY

-DEVELOPMENTS-

Konstantinou Palaiologou Street, No 6
Alexandros Court 2,
Larnaca , Cyprus
P: +357 24251008
M:+357 99529266

www.seraydevelopments.com
info@seraydevelopments.com

<< We work hard to house your dreams >>

— PROFILE —

NEXUS stands out as a new landmark development setting high standards for modern-day living in Larnaca. Designed by the prestigious Code Architecture Studio, the contemporary architecture is enhanced by the use of state-of-the-art materials which highlight detail and provide an inviting architecture. This unique four-storey development boasts eight apartments. The first three storeys have two 2-bedroom apartments per floor. The fourth floor consists of two 2-bedroom apartments, in addition to their roof gardens offering a pleasant view of the surroundings. Connected to the apartments through private exterior stairs, both roof gardens also provide a room with all the necessary provisions for a bathroom. Each apartment has its own storage room and an allocated covered parking space.



—LOCATION—

Situated in the New Hospital area, Nexus is a very short drive away from the City Center right between Cineplex and the Larnaca Fire Brigade Station and a mere seven-minute drive from the Larnaca International Airport with easy access to the main motorway network. The project is located in close proximity to all amenities which make the project ideal for residential and office use. The location of the building has been carefully selected to enable its residents to enjoy the serenity of the neighborhood and enjoy the City's vibe in a blink of an eye.



■ Great Locations

■ Innovative Design

■ Quality Workmanship

■ Value for Money

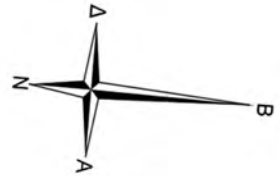
— PLANS —

GROUND FLOOR PLAN



PLANS

FIRST FLOOR PLAN



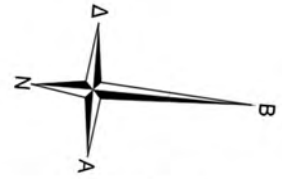
SERAY 8 NEXUS	Internal Area (sq.m.)	No of bathrooms	Covered Verandas (sq.m.)
---------------	-----------------------	-----------------	--------------------------

FLAT 101	First Floor	79	2	16 m
FLAT 102		79	2	15m



— PLANS —

SECOND FLOOR PLAN



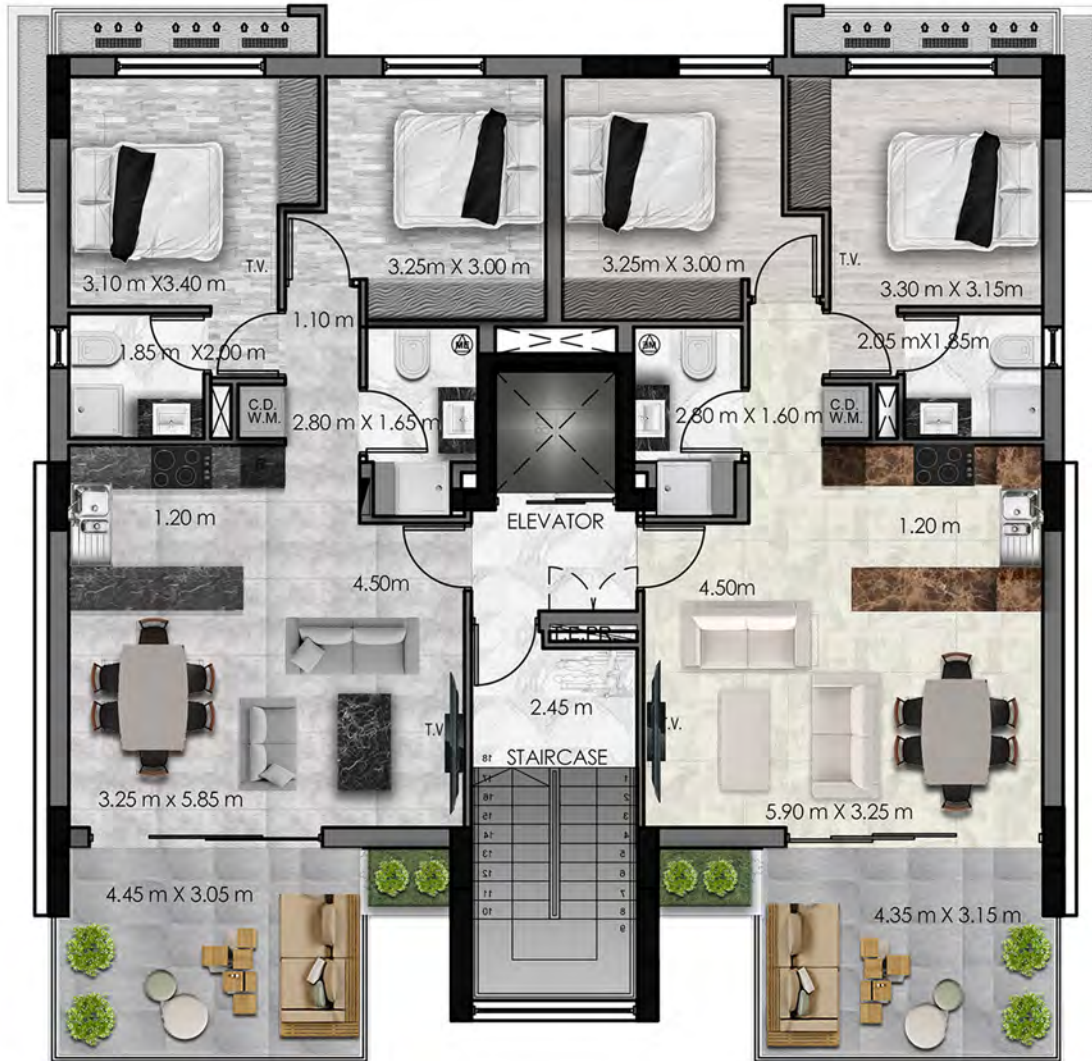
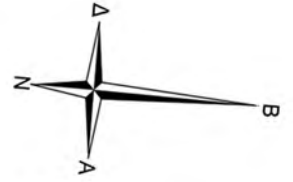
SERAY 8 NEXUS		Internal Area (sq.m.)	No of bathrooms	Covered Verandas (sq.m.)
---------------	--	-----------------------	-----------------	--------------------------

FLAT 201	Second Floor	79	2	15m
FLAT 202		79	2	16m



PLANS

THIRD FLOOR PLAN



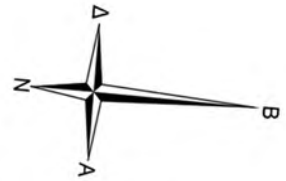
SERAY 8 NEXUS	Internal Area (sq.m.)	No of bathrooms	Covered Verandas (sq.m.)
---------------	-----------------------	-----------------	--------------------------

FLAT 301	Third Floor	79	2	15m
FLAT 302		79	2	14m



PLANS

FOURTH FLOOR PLAN



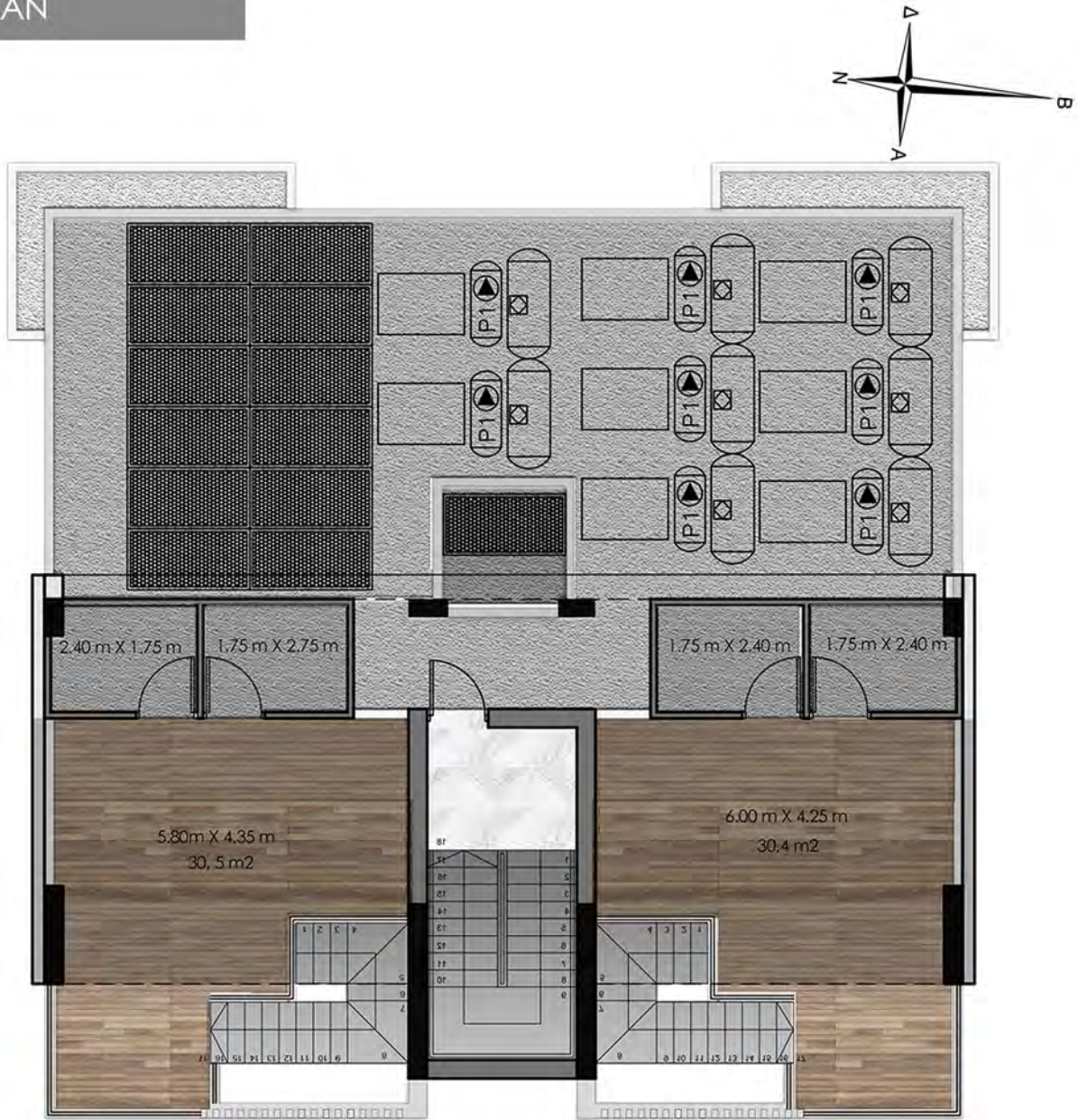
SERAY 8 NEXUS		Internal Area (sq.m.)	No of bathrooms	Covered Verandas (sq.m.)
---------------	--	-----------------------	-----------------	--------------------------

FLAT 401	Fourth Floor	79	2	19m
FLAT 402		79	2	19m



PLANS

ROOF PLAN



SERAY 8 NEXUS		Internal Area (sq.m.)	Covered Verandas (sq.m.)
---------------	--	-----------------------	--------------------------

ROOF 401	Roof	31	28m
ROOF 402		30	26 m

