



“We work hard to build your dreams”

THE PROJECT

CENTRUM stands out as a new landmark development setting high standards for modern-day living in Larnaca. Developed by SERAY LTD, the design of the building is enhanced by the use of state-of-art materials which highlight detail and provide a contemporary architecture. This unique four-storey development boasts eight apartments. The first three storeys have two 2-bedroom apartments per floor. The fourth floor consists of two 2-bedroom apartments, in addition to their roof gardens offering a fabulous view of the Salt Lake. Connected to the apartments through private exterior stairs, both roof gardens also provide a room with all the necessary provisions for a bathroom. Each apartment has its own storage room and an allocated covered parking space. The Class A Energy Certificate ensures low energy consumption and reduced expenses.

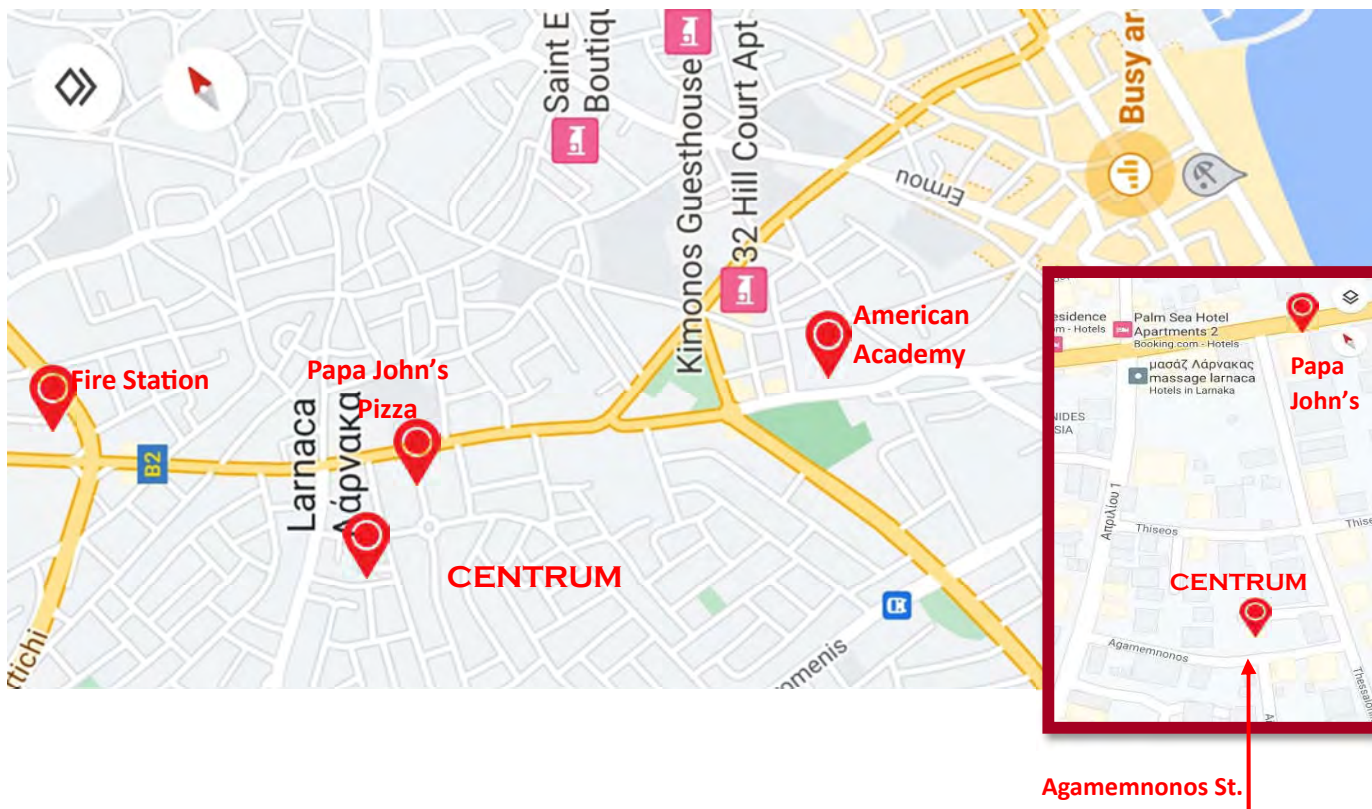


- Modern and functional design

- High quality materials

THE LOCATION

CENTRUM is situated in the heart of Larnaca City in an upscale residential area known as Drosia. The building is equidistant from Finikoudes, the Salt Lake, the Metropolis Mall and the New Hospital. It is ideally positioned in walking distance to a plethora of amenities such as supermarkets, schools, shops, cafes and medical facilities. The location of the building has been carefully selected to enable its residents to enjoy the serenity of the neighborhood and yet feel the city's vibe in a blink of an eye.



- Residential area
- All amenities within easy reach

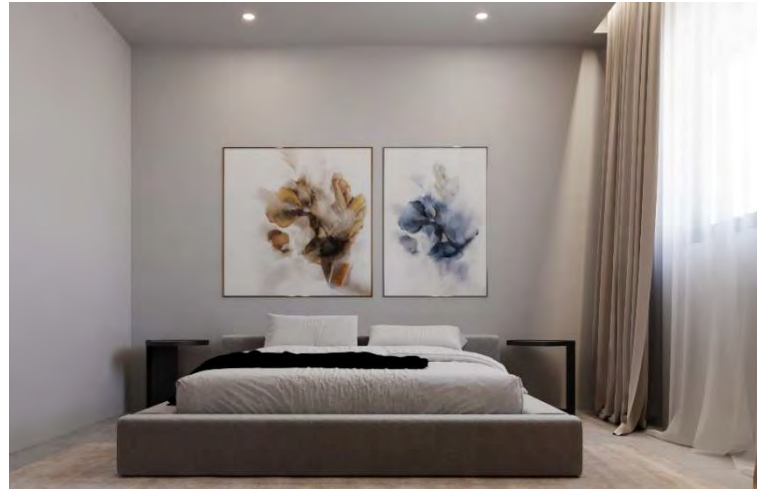
EXTERIORS



EXTERIORS



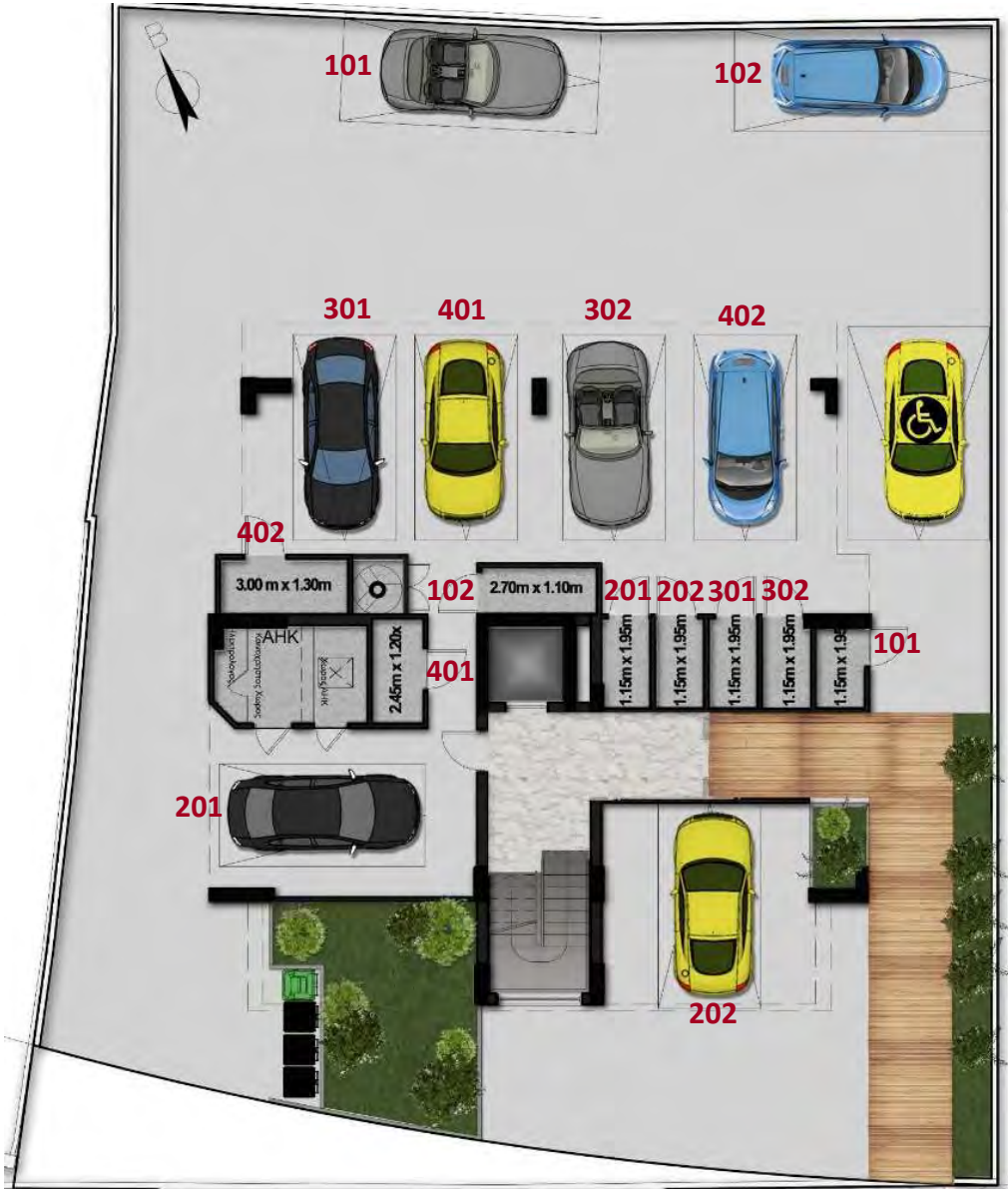
INTERIORS



INTERIORS



Ground Floor Plan



The Lobby



Typical Floor Plan: 1st-2nd-3rd



FLAT 101

2 BEDROOMS
 2 BATHROOMS
 79 sqm INTERIOR
 20 sqm COVERED VERANDA
 4 sqm UNCOVERED VERANDA
 9 sqm COMMON AREA
 2.5 sqm STORAGE AREA
 12 sqm PARKING AREA
TOTAL AREA 126.5 sqm

FLAT 201-301

2 BEDROOMS
 2 BATHROOMS
 79 sqm INTERIOR
 20 sqm COVERED VERANDA
 9 sqm COMMON AREA
 2.6 sqm STORAGE AREA
 12 sqm PARKING AREA
TOTAL AREA 122.6 sqm



FLAT 102

2 BEDROOMS
 2 BATHROOMS
 79 sqm INTERIOR
 20 sqm COVERED VERANDA
 4 sqm UNCOVERED VERANDA
 9 sqm COMMON AREA
 3 sqm STORAGE AREA
 12 sqm PARKING AREA
TOTAL AREA 127 sqm

FLAT 202-302

2 BEDROOMS
 2 BATHROOMS
 79 sqm INTERIOR
 20 sqm COVERED VERANDA
 9 sqm COMMON AREA
 2.6 sqm STORAGE AREA
 12 sqm PARKING AREA
TOTAL AREA 122.6 sqm

Fourth Floor Plan



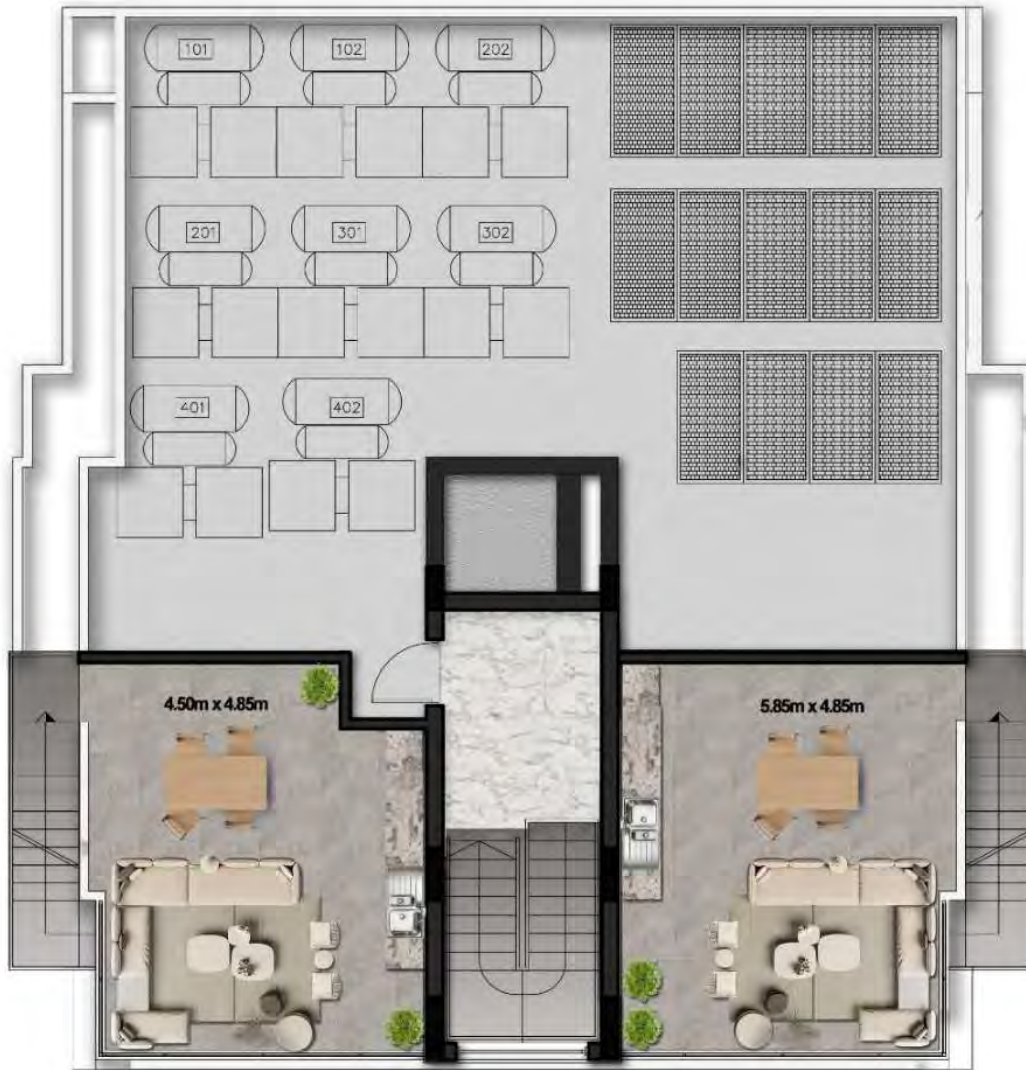
FLAT 401

2 BEDROOMS
 2 BATHROOMS
 79 sqm INTERIOR
 16 sqm COVERED VERANDA
 9 sqm COMMON AREA
 31 sqm ROOF GARDEN
 3 sqm STORAGE AREA
 12 sqm PARKING AREA
TOTAL AREA 141 sqm

FLAT 402

2 BEDROOMS
 2 BATHROOMS
 82 sqm INTERIOR
 16 sqm COVERED VERANDA
 9 sqm COMMON AREA
 32 sqm ROOF GARDEN
 4.5 sqm STORAGE AREA
 12 sqm PARKING AREA
TOTAL AREA 155.5 sqm

Roof Garden Plan





Constantinou Paleologou No6, Alexandrou Court 2, Larnaca, Cyprus.

Phone: + 357 24 25 10 08

Mobile: + 357 99 52 92 66

E-mail: info@seraydevelopments.com

Website: www.seraydevelopments.com